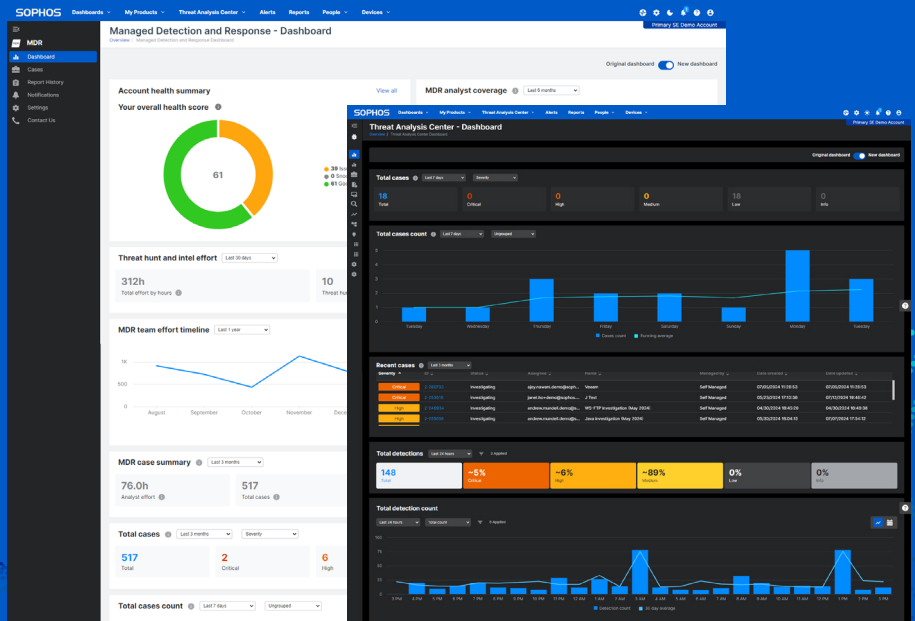


# Sophos MDR

## Service insights and reporting



Sophos MDR is a 24/7 fully managed service delivered by experts specializing in detecting and responding to cyberattacks that technology solutions alone cannot prevent. Comprehensive service insights provide a detailed view of MDR analyst activity, ensuring you have full visibility and confidence when you entrust your IT security operations to Sophos.

### Executive dashboards

Customizable dashboards provide at-a-glance visibility into the efforts undertaken by Sophos threat analysts on your behalf, including proactive threat hunting, threat investigations, and full-scale incident response.

### Threat activity reports

Scheduled reports in Sophos Central provide details of MDR threat detections, cases, escalations, and response actions executed to neutralize attacks. Detections are mapped to the MITRE ATT&CK framework to help you understand the security risks associated with threats.

### Threat hunting and intelligence insights

Expert-led threat hunting is critical to protect organizations in the ever-evolving threat landscape. Get insights into the proactive efforts of our threat hunting and intelligence teams, tracking and studying adversary groups, and searching for threats in your environment.

### Event pipeline visualization

See how Sophos MDR processes your data, from initial threat detections based on ingested telemetry, correlated and filtered to reduce noise, through to cases for investigation and confirmed incidents that could pose a imminent threat to your business.

### Case investigation metrics

Our security experts conduct in-depth investigations and execute response actions to eliminate threats. Understand the time spent on investigations and the cases fully resolved with no action required by your team. Attackers don't stop on weekends - and neither do we - Sophos MDR service insights highlight the cases created and actioned on weekends.

### MDR analyst availability monitoring

Sophos MDR is delivered by over 500 experts and backed by seven security operations centers. To ensure your organization is always protected, we monitor analyst activity around the clock and display analyst coverage in your Sophos Central console.

### Account Health Check dashboard

A strong security posture is a critical foundation for your security strategy. The Sophos Account Health Check dashboard highlights devices and policies not using recommended security settings and provides simple click-to-fix options to remediate configuration issues.

### Live threat intelligence briefings

The MDR ThreatCast is a monthly briefing available exclusively to Sophos MDR customers. Delivered by our MDR Operations team, it provides valuable insights into the latest threat intelligence and security best practices.

To learn more, visit  
[sophos.com/mdr](https://sophos.com/mdr)

**SOPHOS**